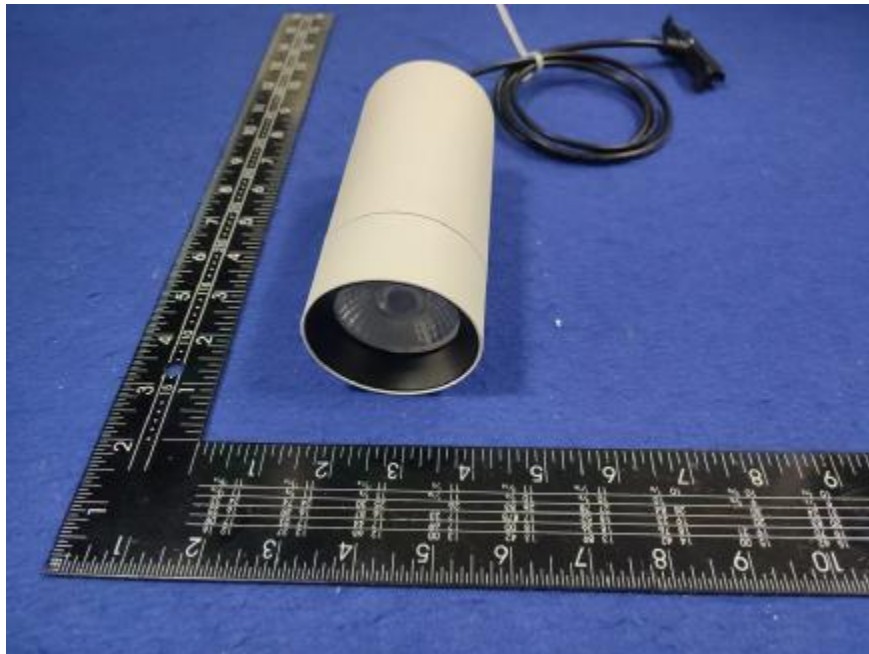


## Luminaire Photograph



|                     |         |                          |
|---------------------|---------|--------------------------|
| Light Output Ratio: | 84.3%   |                          |
| Luminaire Power:    | 14.84 W |                          |
| SHR Nominal:        | 0.00    | Calculated using the TM5 |
| SHR Maximum:        | 0.30    | fine grid method.        |

C Range: 0 - 360DEG  
C Interval: 30.0DEG  
Test Speed: HIGH  
Temperature: 25.3 °C  
Operators: zoe  
Test Date: 2025-01-01

γ Range: 0 - 180DEG  
γ Interval: 1.0DEG  
Test System: EVERFINE GO-SPEX500\_V1 SYSTEM V2.00.461  
Humidity: 65.0%  
Test Distance: 3.160m [K=1.0000]  
Remarks: LAMP: BXRE-30G10TH-A-83 Ra:90  
LENS: PM-0132 15R  
NOT DRIVER: 48V  
30minutes warm-up

## LUMINOUS INTENSITY DISTRIBUTION DIAGRAM

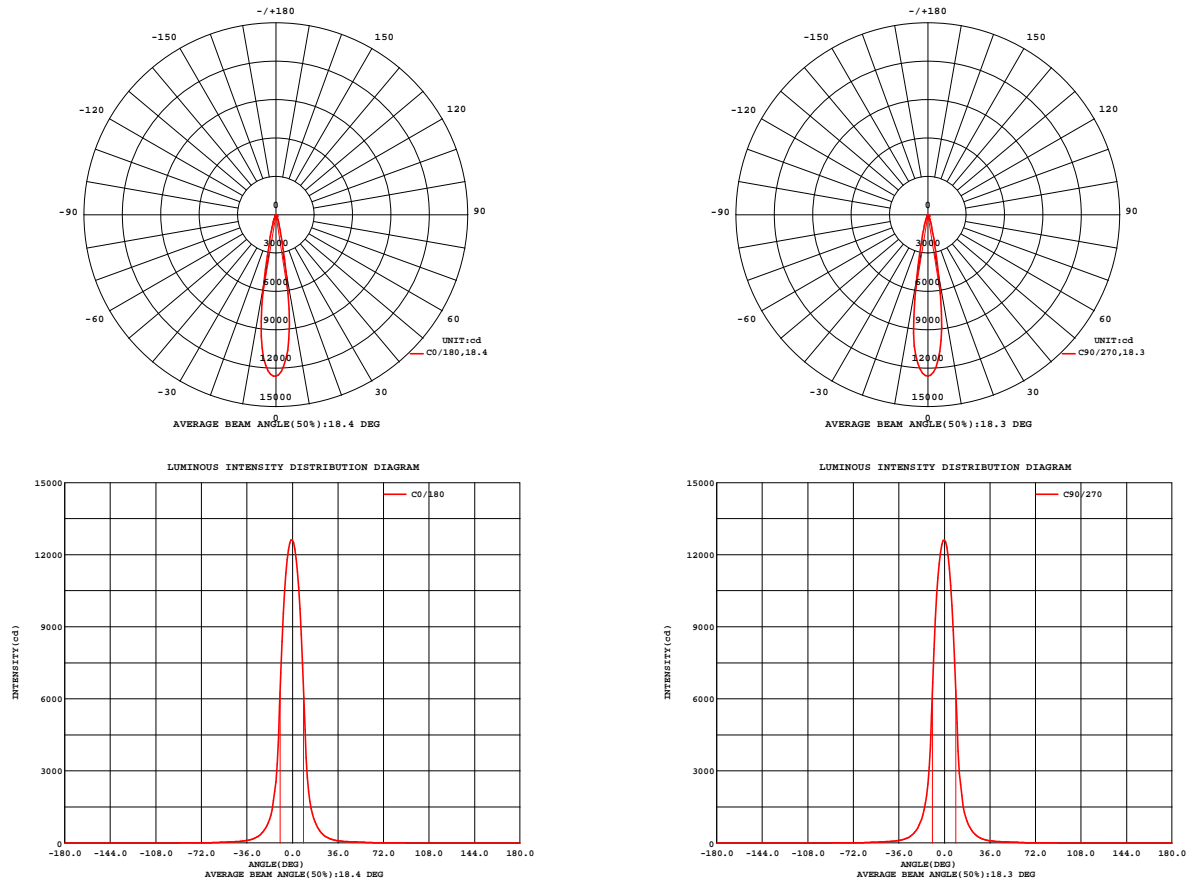


Fig. C0/C180

Fig. C90/C270

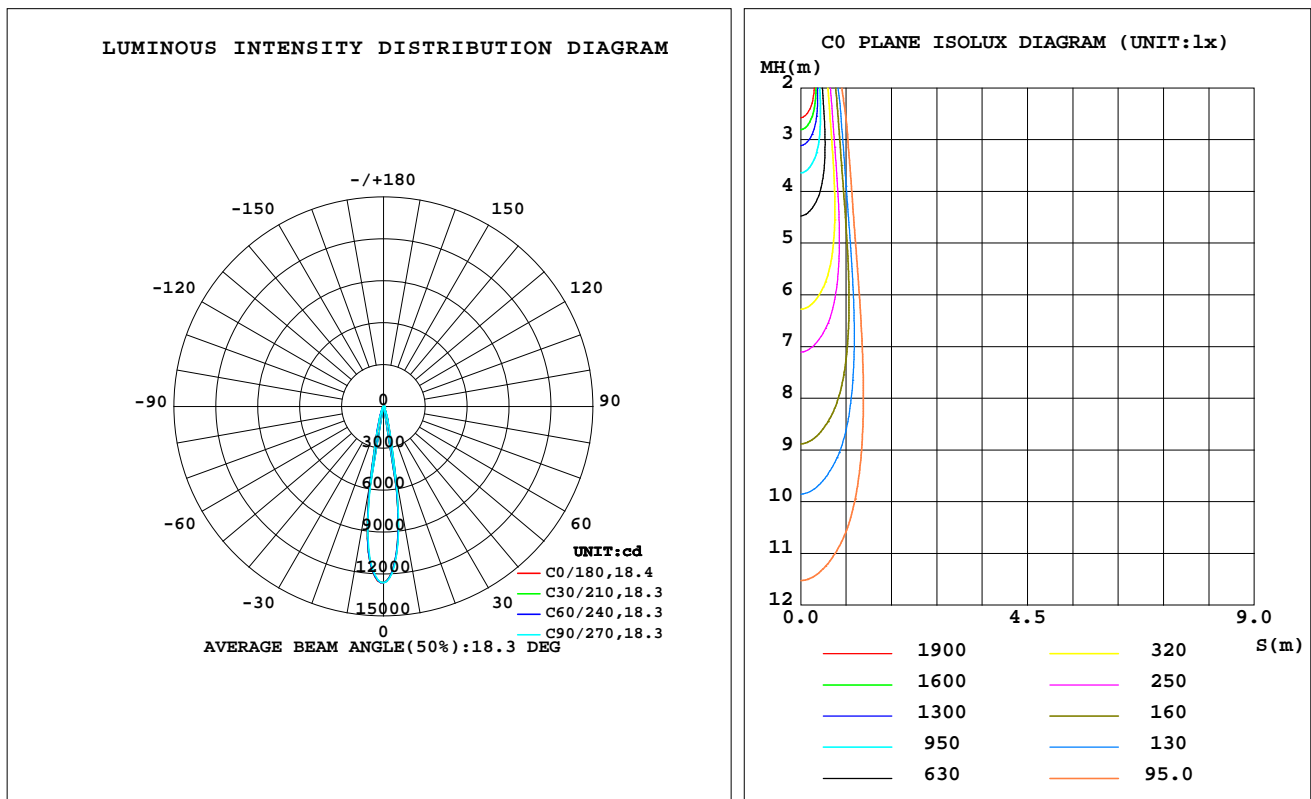
C Range: 0 - 360DEG  
C Interval: 30.0DEG  
Test Speed: HIGH  
Temperature:25.3 °C  
Operators:zoe  
Test Date:2025-01-01

$\gamma$  Range: 0 - 180DEG  
 $\gamma$  Interval: 1.0DEG  
Test System:EVERFINE GO-SPEX500\_V1 SYSTEM V2.00.461  
Humidity:65.0%  
Test Distance:3.160m [K=1.0000]  
Remarks: LAMP:BXRE-30G10TH-A-83 Ra:90  
LENS:PM-0132 15R  
NOT DRIVER:48V  
30minutes warm-up

## LUMINAIRE PHOTOMETRIC TEST REPORT

|   |                  |                        |
|---|------------------|------------------------|
| Test:U:47.997V I:0.3092A P:14.841W PF:1.0000 Freq:49.99Hz<br>Lamp Flux:1994.65x1 lm |                  |                        |
| NAME: OZ48-CT-64  | TYPE:            | WEIGHT:                |
| SPEC.: 3000K  | DIM.:            | SERIAL No.: 2501020001 |
| MFR.: RISE  | SUR.: 0.002826m2 | Shielding Angle:       |

| DATA OF LAMP     |           | PHOTOMETRIC DATA Eff: 113.35 lm/W |        |                   |          |
|------------------|-----------|-----------------------------------|--------|-------------------|----------|
| MODEL            | Brideglux | I <sub>max</sub> (cd)             | 12614  | S/MH(C0/180)      | 0.30     |
| NOMINAL POWER(W) | 15        | LOR(%)                            | 84.3   | S/MH(C90/270)     | 0.30     |
| RATED VOLTAGE(V) | 48        | TOTAL FLUX(lm)                    | 1682.2 | η UP,DN(C0-180)   | 0.0,41.1 |
| NOMINAL FLUX(lm) | 1994.65   | CIE CLASS                         | DIRECT | η UP,DN(C180-360) | 0.0,43.3 |
| LAMPS INSIDE     | 1         | η up(%)                           | 0.0    | CIBSE SHR NOM     | 0.00     |
| TEST VOLTAGE(V)  | 48        | η down(%)                         | 84.3   | CIBSE SHR MAX     | 0.30     |



C Range: 0 - 360DEG  
C Interval: 30.0DEG  
Test Speed: HIGH  
Temperature:25.3℃  
Operators:zoe  
Test Date:2025-01-01

γ Range: 0 - 180DEG  
γ Interval: 1.0DEG  
Test System:EVERFINE GO-SPEX500\_V1 SYSTEM V2.00.461  
Humidity:65.0%  
Test Distance:3.160m [K=1.0000]  
Remarks: LAMP:BXRE-30G10TH-A-83 Ra:90  
LENS:PM-0132 15R  
NOT DRIVER:48V  
30minutes warm-up

## ZONAL FLUX DIAGRAM

### ZONAL FLUX DIAGRAM:

| $\gamma$ | C0                       | C45    | C90    | C135   | C180   | C225   | C270   | C315   | $\gamma$ | $\Phi$ zone | $\Phi$ total | %lum,lamp |
|----------|--------------------------|--------|--------|--------|--------|--------|--------|--------|----------|-------------|--------------|-----------|
| 10       | 472.0                    | 477.6  | 499.9  | 535.2  | 568.1  | 557.7  | 530.1  | 495.4  | 0- 10    | 855.1       | 855.1        | 50.8,42.9 |
| 20       | 64.92                    | 64.79  | 67.30  | 71.06  | 72.68  | 74.63  | 74.38  | 68.45  | 10- 20   | 506.0       | 1361         | 80.9,68.2 |
| 30       | 16.89                    | 16.46  | 16.92  | 17.62  | 19.38  | 19.36  | 18.81  | 17.60  | 20- 30   | 164.5       | 1526         | 90.7,76.5 |
| 40       | 7.040                    | 7.066  | 7.107  | 7.187  | 7.597  | 7.805  | 7.814  | 7.245  | 30- 40   | 71.42       | 1597         | 94.9,80.1 |
| 50       | 4.206                    | 4.300  | 4.321  | 4.365  | 4.372  | 4.493  | 4.429  | 4.345  | 40- 50   | 42.79       | 1640         | 97.5,82.2 |
| 60       | 2.153                    | 2.259  | 2.278  | 2.196  | 2.139  | 2.174  | 2.187  | 2.158  | 50- 60   | 29.41       | 1669         | 99.2,83.7 |
| 70       | 0.4599                   | 0.4994 | 0.5220 | 0.4945 | 0.4571 | 0.4648 | 0.4832 | 0.4665 | 60- 70   | 11.66       | 1681         | 99.9,84.3 |
| 80       | 0.0108                   | 0.0080 | 0.0100 | 0.0084 | 0.0094 | 0.0076 | 0.0090 | 0.0068 | 70- 80   | 1.296       | 1682         | 100,84.3  |
| 90       | 0                        | 0      | 0      | 0      | 0      | 0      | 0      | 0      | 80- 90   | 0.0662      | 1682         | 100,84.3  |
| 100      | 0                        | 0      | 0      | 0      | 0      | 0      | 0      | 0      | 90-100   | 0           | 1682         | 100,84.3  |
| 110      | 0                        | 0      | 0      | 0      | 0      | 0      | 0      | 0      | 100-110  | 0           | 1682         | 100,84.3  |
| 120      | 0                        | 0      | 0      | 0      | 0      | 0      | 0      | 0      | 110-120  | 0           | 1682         | 100,84.3  |
| 130      | 0                        | 0      | 0      | 0      | 0      | 0      | 0      | 0      | 120-130  | 0           | 1682         | 100,84.3  |
| 140      | 0                        | 0      | 0      | 0      | 0      | 0      | 0      | 0      | 130-140  | 0           | 1682         | 100,84.3  |
| 150      | 0                        | 0      | 0      | 0      | 0      | 0      | 0      | 0      | 140-150  | 0           | 1682         | 100,84.3  |
| 160      | 0                        | 0      | 0      | 0      | 0      | 0      | 0      | 0      | 150-160  | 0           | 1682         | 100,84.3  |
| 170      | 0                        | 0      | 0      | 0      | 0      | 0      | 0      | 0      | 160-170  | 0           | 1682         | 100,84.3  |
| 180      | 0                        | 0      | 0      | 0      | 0      | 0      | 0      | 0      | 170-180  | 0           | 1682         | 100,84.3  |
| DEG      | LUMINOUS INTENSITY:X10cd |        |        |        |        |        |        |        |          | UNIT:lm     |              |           |

C Range: 0 - 360DEG  
C Interval: 30.0DEG  
Test Speed: HIGH  
Temperature:25.3℃  
Operators:zoe  
Test Date:2025-01-01

$\gamma$  Range: 0 - 180DEG  
 $\gamma$  Interval: 1.0DEG  
Test System:EVERFINE GO-SPEX500\_V1 SYSTEM V2.00.461  
Humidity:65.0%  
Test Distance:3.160m [K=1.0000]  
Remarks: LAMP:BXRE-30G10TH-A-83 Ra:90  
LENS:PM-0132 15R  
NOT DRIVER:48V  
30minutes warm-up

### LUMINANCE LIMITATION CURVES

Test:U:47.997V I:0.3092A P:14.841W PF:1.0000 Freq:49.99Hz  
Lamp Flux:1994.65x1 lm

NAME: OZ48-CT-64

TYPE:

WEIGHT:

SPEC.: 3000K

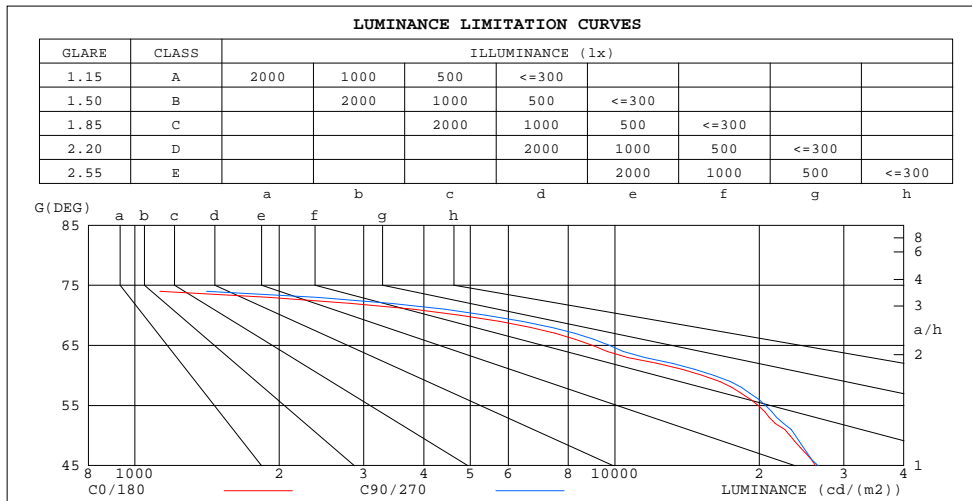
DIM.:

SERIAL No.: 2501020001

MFR.: RISE

SUR.: 0.002826m2

Shielding Angle:



| LUMINANCE cd/(m2) |        |         |
|-------------------|--------|---------|
| G(180)            | C0/180 | C90/270 |
| 85                | 354    | 326     |
| 80                | 219    | 205     |
| 75                | 449    | 557     |
| 70                | 4763   | 5399    |
| 65                | 8987   | 9747    |
| 60                | 15249  | 16112   |
| 55                | 19918  | 20627   |
| 50                | 23174  | 23776   |
| 45                | 26207  | 26518   |

C Range: 0 - 360DEG  
C Interval: 30.0DEG  
Test Speed: HIGH  
Temperature:25.3℃  
Operators:zoe  
Test Date:2025-01-01

γ Range: 0 - 180DEG  
γ Interval: 1.0DEG  
Test System:EVERFINE GO-SPEX500\_V1 SYSTEM V2.00.461  
Humidity:65.0%  
Test Distance:3.160m [K=1.0000]  
Remarks: LAMP:BXRE-30G10TH-A-83 Ra:90  
LENS:PM-0132 15R  
NOT DRIVER:48V  
30minutes warm-up

## CU AND LUMINAIRE BUDGETARY ESTIMATE DIAGRAM

Test:U:47.997V I:0.3092A P:14.841W PF:1.0000 Freq:49.99Hz  
Lamp Flux:1994.65x1 lm

NAME: OZ48-CT-64

TYPE:

WEIGHT:

SPEC.: 3000K

DIM.:

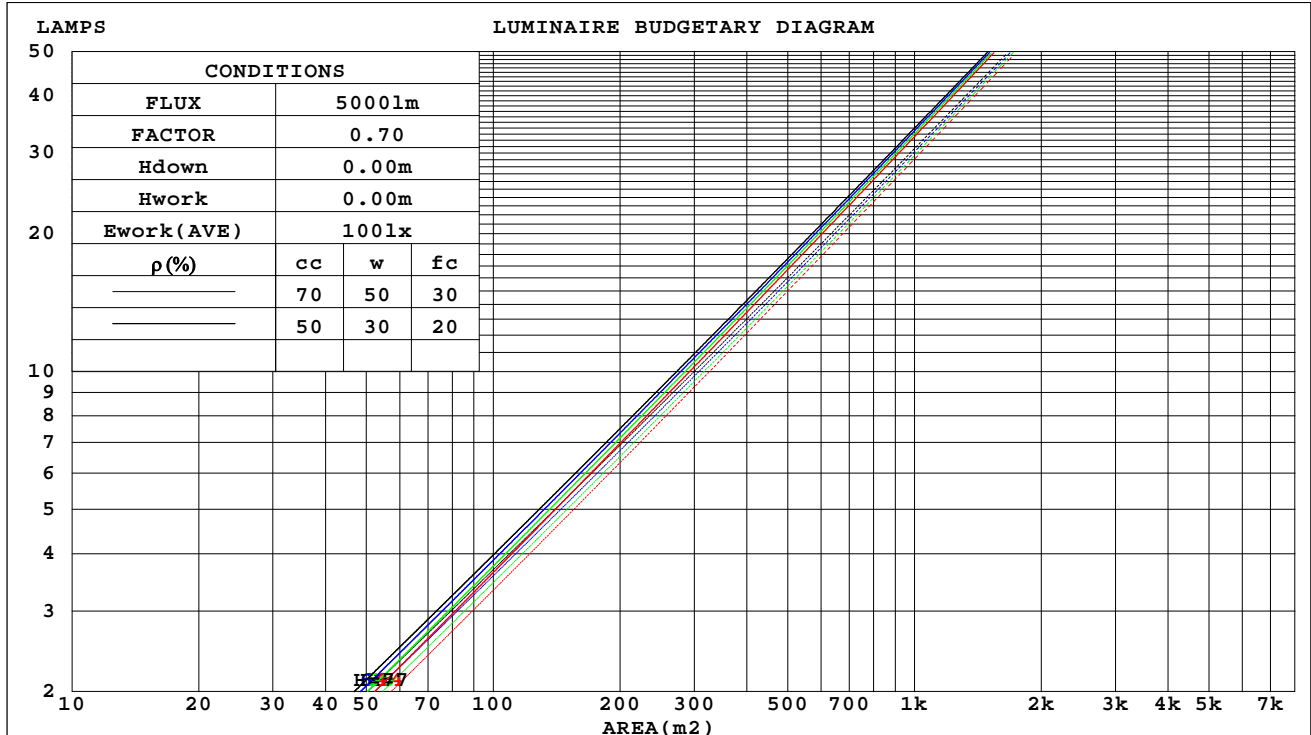
SERIAL No.: 2501020001

MFR.: RISE

SUR.: 0.002826m2

Shielding Angle:

| $\rho_{cc}$ | 80%                   |      |      | 70%                             |     |     | 50% |     |     | 30% |     |     | 10% |     |     | 0   |
|-------------|-----------------------|------|------|---------------------------------|-----|-----|-----|-----|-----|-----|-----|-----|-----|-----|-----|-----|
| $\rho_w$    | 50%                   | 30%  | 10%  | 50%                             | 30% | 10% | 50% | 30% | 10% | 50% | 30% | 10% | 50% | 30% | 10% | 0   |
| $\rho_{fc}$ | 20%                   |      |      | 20%                             |     |     | 20% |     |     | 20% |     |     | 20% |     |     | 0   |
| RCR         | RCR:Room Cavity Ratio |      |      | Coefficients of Utilization(CU) |     |     |     |     |     |     |     |     |     |     |     |     |
| 0.0         | 1.00                  | 1.00 | 1.00 | .98                             | .98 | .98 | .94 | .94 | .94 | .90 | .90 | .90 | .86 | .86 | .86 | .84 |
| 1.0         | .95                   | .94  | .92  | .94                             | .92 | .91 | .90 | .89 | .88 | .87 | .86 | .86 | .84 | .84 | .83 | .82 |
| 2.0         | .91                   | .89  | .87  | .90                             | .87 | .86 | .87 | .85 | .84 | .85 | .83 | .82 | .82 | .81 | .80 | .79 |
| 3.0         | .87                   | .84  | .82  | .86                             | .84 | .81 | .84 | .82 | .80 | .82 | .80 | .79 | .80 | .79 | .78 | .77 |
| 4.0         | .84                   | .81  | .79  | .83                             | .80 | .78 | .82 | .79 | .77 | .80 | .78 | .76 | .79 | .77 | .76 | .75 |
| 5.0         | .81                   | .78  | .76  | .81                             | .78 | .75 | .79 | .77 | .75 | .78 | .76 | .74 | .77 | .75 | .73 | .73 |
| 6.0         | .79                   | .76  | .73  | .78                             | .75 | .73 | .77 | .75 | .73 | .76 | .74 | .72 | .75 | .73 | .72 | .71 |
| 7.0         | .77                   | .73  | .71  | .76                             | .73 | .71 | .75 | .73 | .71 | .75 | .72 | .70 | .74 | .72 | .70 | .69 |
| 8.0         | .75                   | .72  | .69  | .74                             | .71 | .69 | .74 | .71 | .69 | .73 | .71 | .69 | .72 | .70 | .68 | .68 |
| 9.0         | .73                   | .70  | .68  | .73                             | .70 | .68 | .72 | .69 | .67 | .71 | .69 | .67 | .71 | .69 | .67 | .66 |
| 10.0        | .71                   | .68  | .66  | .71                             | .68 | .66 | .71 | .68 | .66 | .70 | .68 | .66 | .70 | .67 | .66 | .65 |



C Range: 0 - 360DEG  
C Interval: 30.0DEG  
Test Speed: HIGH  
Temperature:25.3℃  
Operators:zoe  
Test Date:2025-01-01

$\gamma$  Range: 0 - 180DEG  
 $\gamma$  Interval: 1.0DEG  
Test System:EVERFINE GO-SPEX500\_V1 SYSTEM V2.00.461  
Humidity:65.0%  
Test Distance:3.160m [K=1.0000]  
Remarks: LAMP:BXRE-30G10TH-A-83 Ra:90  
LENS:PM-0132 15R  
NOT DRIVER:48V  
30minutes warm-up

## WEC AND CCEC

|   |                  |                        |
|---|------------------|------------------------|
| Test:U:47.997V I:0.3092A P:14.841W PF:1.0000 Freq:49.99Hz<br>Lamp Flux:1994.65x1 lm |                  |                        |
| NAME: OZ48-CT-64  | TYPE:            | WEIGHT:                |
| SPEC.: 3000K  | DIM.:            | SERIAL No.: 2501020001 |
| MFR.: RISE  | SUR.: 0.002826m2 | Shielding Angle:       |

| pcc  | 80%                   |      |      | 70%  |      |      | 50%                             |      |      | 30%  |      |      | 10%  |      |      | 0 |
|------|-----------------------|------|------|------|------|------|---------------------------------|------|------|------|------|------|------|------|------|---|
| pw   | 50%                   | 30%  | 10%  | 50%  | 30%  | 10%  | 50%                             | 30%  | 10%  | 50%  | 30%  | 10%  | 50%  | 30%  | 10%  | 0 |
| pfc  | 20%                   |      |      | 20%  |      |      | 20%                             |      |      | 20%  |      |      | 20%  |      |      | 0 |
| RCR  | RCR:Room Cavity Ratio |      |      |      |      |      | Wall Exitance Coefficients(WEC) |      |      |      |      |      |      |      |      |   |
| 0.0  |                       |      |      |      |      |      |                                 |      |      |      |      |      |      |      |      |   |
| 1.0  | .112                  | .064 | .020 | .107 | .061 | .019 | .096                            | .055 | .018 | .087 | .050 | .016 | .078 | .045 | .015 |   |
| 2.0  | .104                  | .057 | .018 | .100 | .055 | .017 | .091                            | .051 | .016 | .083 | .047 | .015 | .076 | .043 | .014 |   |
| 3.0  | .097                  | .052 | .015 | .093 | .050 | .015 | .086                            | .047 | .014 | .079 | .043 | .013 | .073 | .041 | .013 |   |
| 4.0  | .090                  | .047 | .014 | .087 | .046 | .013 | .081                            | .043 | .013 | .075 | .041 | .012 | .070 | .038 | .012 |   |
| 5.0  | .084                  | .043 | .012 | .082 | .042 | .012 | .077                            | .040 | .012 | .072 | .038 | .011 | .067 | .036 | .011 |   |
| 6.0  | .079                  | .040 | .011 | .077 | .039 | .011 | .073                            | .037 | .011 | .069 | .036 | .010 | .065 | .034 | .010 |   |
| 7.0  | .075                  | .037 | .010 | .073 | .036 | .010 | .069                            | .035 | .010 | .065 | .034 | .010 | .062 | .032 | .009 |   |
| 8.0  | .071                  | .035 | .010 | .069 | .034 | .010 | .066                            | .033 | .009 | .063 | .032 | .009 | .060 | .031 | .009 |   |
| 9.0  | .067                  | .032 | .009 | .066 | .032 | .009 | .063                            | .031 | .009 | .060 | .030 | .009 | .057 | .029 | .008 |   |
| 10.0 | .064                  | .031 | .009 | .063 | .030 | .008 | .060                            | .029 | .008 | .058 | .029 | .008 | .055 | .028 | .008 |   |

| pcc  | 80%                   |      |      | 70%  |      |      | 50%  |      |      | 30%  |      |      | 10%  |      |      | 0 |  |
|------|-----------------------|------|------|------|------|------|--|------|------|------|------|------|------|------|------|---|--|
| pw   | 50%                   | 30%  | 10%  | 50%  | 30%  | 10%  | 50%  | 30%  | 10%  | 50%  | 30%  | 10%  | 50%  | 30%  | 10%  | 0 |  |
| pfc  | 20%                   |      |      | 20%  |      |      | 20%  |      |      | 20%  |      |      | 20%  |      |      | 0 |  |
| RCR  | RCR:Room Cavity Ratio |      |      |      |      |      | Ceiling Cavity Exitance Coefficients(CCEC) |      |      |      |      |      |      |      |      |   |  |
| 0.0  | .161                  | .161 | .161 | .137 | .137 | .137 | .094                                       | .094 | .094 | .054 | .054 | .054 | .017 | .017 | .017 |   |  |
| 1.0  | .142                  | .133 | .125 | .121 | .114 | .108 | .083                                       | .079 | .074 | .048 | .045 | .043 | .015 | .015 | .014 |   |  |
| 2.0  | .126                  | .112 | .100 | .108 | .096 | .086 | .074                                       | .067 | .060 | .043 | .039 | .035 | .014 | .013 | .011 |   |  |
| 3.0  | .114                  | .096 | .081 | .097 | .082 | .070 | .067                                       | .057 | .049 | .039 | .033 | .029 | .012 | .011 | .010 |   |  |
| 4.0  | .103                  | .082 | .067 | .088 | .071 | .058 | .061                                       | .050 | .041 | .035 | .029 | .024 | .011 | .009 | .008 |   |  |
| 5.0  | .094                  | .072 | .056 | .080 | .062 | .049 | .055                                       | .044 | .034 | .032 | .026 | .020 | .010 | .008 | .007 |   |  |
| 6.0  | .086                  | .064 | .048 | .074 | .055 | .041 | .051                                       | .039 | .029 | .030 | .023 | .017 | .010 | .007 | .006 |   |  |
| 7.0  | .079                  | .057 | .041 | .068 | .049 | .035 | .047                                       | .034 | .025 | .027 | .020 | .015 | .009 | .007 | .005 |   |  |
| 8.0  | .073                  | .051 | .035 | .063 | .044 | .031 | .044                                       | .031 | .022 | .025 | .018 | .013 | .008 | .006 | .004 |   |  |
| 9.0  | .068                  | .046 | .031 | .059 | .040 | .027 | .041                                       | .028 | .019 | .024 | .017 | .011 | .008 | .005 | .004 |   |  |
| 10.0 | .064                  | .042 | .027 | .055 | .036 | .024 | .038                                       | .025 | .017 | .022 | .015 | .010 | .007 | .005 | .003 |   |  |

C Range: 0 - 360DEG  
C Interval: 30.0DEG  
Test Speed: HIGH  
Temperature:25.3℃  
Operators:zoe  
Test Date:2025-01-01

γ Range: 0 - 180DEG  
γ Interval: 1.0DEG  
Test System:EVERFINE GO-SPEX500\_V1 SYSTEM V2.00.461  
Humidity:65.0%  
Test Distance:3.160m [K=1.0000]  
Remarks: LAMP:BXRE-30G10TH-A-83 Ra:90  
LENS:PM-0132 15R  
NOT DRIVER:48V  
30minutes warm-up

## UGR(Unified Glare Rating) Table

|   |                  |      |      |      |                  |                |      |                        |      |      |
|---|------------------|------|------|------|------------------|----------------|------|------------------------|------|------|
| Test:U:47.997V I:0.3092A P:14.841W PF:1.0000 Freq:49.99Hz<br>Lamp Flux:1994.65x1 lm |                  |      |      |      |                  |                |      |                        |      |      |
| NAME: OZ48-CT-64  |                  |      |      |      | TYPE:            |                |      | WEIGHT:                |      |      |
| SPEC.: 3000K  |                  |      |      |      | DIM.:            |                |      | SERIAL No.: 2501020001 |      |      |
| MFR.: RISE  |                  |      |      |      | SUR.: 0.002826m2 |                |      | Shielding Angle:       |      |      |
| ceiling/cavity  | 0.7              | 0.7  | 0.5  | 0.5  | 0.3              | 0.7            | 0.7  | 0.5                    | 0.5  | 0.3  |
| walls   | 0.5              | 0.3  | 0.5  | 0.3  | 0.3              | 0.5            | 0.3  | 0.5                    | 0.3  | 0.3  |
| working plane   | 0.2              | 0.2  | 0.2  | 0.2  | 0.2              | 0.2            | 0.2  | 0.2                    | 0.2  | 0.2  |
| Room dimensions   | Viewed crosswise |      |      |      |                  | Viewed endwise |      |                        |      |      |
| x = 2H y = 2H   | 13.6             | 14.2 | 13.8 | 14.3 | 14.5             | 13.7           | 14.3 | 13.9                   | 14.4 | 14.6 |
| 3H  | 13.7             | 14.3 | 13.9 | 14.5 | 14.6             | 13.8           | 14.4 | 14.1                   | 14.6 | 14.8 |
| 4H  | 13.6             | 14.2 | 13.9 | 14.4 | 14.6             | 13.8           | 14.3 | 14.0                   | 14.5 | 14.7 |
| 6H  | 13.5             | 14.1 | 13.8 | 14.3 | 14.5             | 13.7           | 14.2 | 14.0                   | 14.4 | 14.7 |
| 8H  | 13.5             | 14.0 | 13.8 | 14.2 | 14.5             | 13.6           | 14.1 | 13.9                   | 14.4 | 14.6 |
| 12H   | 13.4             | 13.9 | 13.8 | 14.2 | 14.5             | 13.6           | 14.1 | 13.9                   | 14.3 | 14.6 |
| 4H 2H   | 13.7             | 14.3 | 14.0 | 14.5 | 14.7             | 13.8           | 14.4 | 14.1                   | 14.6 | 14.8 |
| 3H  | 13.9             | 14.4 | 14.2 | 14.6 | 14.9             | 14.0           | 14.5 | 14.3                   | 14.7 | 15.0 |
| 4H  | 13.8             | 14.2 | 14.1 | 14.5 | 14.8             | 13.9           | 14.4 | 14.2                   | 14.6 | 14.9 |
| 6H  | 13.7             | 14.1 | 14.0 | 14.4 | 14.7             | 13.8           | 14.2 | 14.2                   | 14.5 | 14.9 |
| 8H  | 13.6             | 14.0 | 14.0 | 14.3 | 14.7             | 13.7           | 14.1 | 14.1                   | 14.5 | 14.8 |
| 12H   | 13.6             | 13.9 | 14.0 | 14.3 | 14.7             | 13.7           | 14.0 | 14.1                   | 14.4 | 14.8 |
| 8H 4H   | 13.6             | 14.0 | 14.0 | 14.4 | 14.7             | 13.8           | 14.1 | 14.1                   | 14.5 | 14.8 |
| 6H  | 13.5             | 13.8 | 13.9 | 14.2 | 14.6             | 13.6           | 14.0 | 14.1                   | 14.3 | 14.8 |
| 8H  | 13.5             | 13.7 | 13.9 | 14.1 | 14.6             | 13.6           | 13.9 | 14.0                   | 14.3 | 14.7 |
| 12H   | 13.4             | 13.6 | 13.9 | 14.1 | 14.5             | 13.5           | 13.8 | 14.0                   | 14.2 | 14.7 |
| 12H 4H  | 13.6             | 13.9 | 14.0 | 14.3 | 14.7             | 13.7           | 14.0 | 14.1                   | 14.4 | 14.8 |
| 6H  | 13.5             | 13.7 | 13.9 | 14.1 | 14.6             | 13.6           | 13.9 | 14.0                   | 14.3 | 14.7 |
| 8H  | 13.4             | 13.6 | 13.9 | 14.1 | 14.5             | 13.5           | 13.8 | 14.0                   | 14.2 | 14.7 |
| Variations with the observer position at spacings(CIE Pub.117):                     |                  |      |      |      |                  |                |      |                        |      |      |
| S = 1.0H  | + 0.9 / - 1.3    |      |      |      |                  | + 0.8 / - 1.2  |      |                        |      |      |
| 1.5H  | + 0.9 / - 0.9    |      |      |      |                  | + 0.9 / - 0.9  |      |                        |      |      |
| 2.0H  | + 1.3 / - 3.1    |      |      |      |                  | + 1.3 / - 2.9  |      |                        |      |      |

CIE Pub.117, 1995 lm Total Lamp Luminous Flux Correct (8log(F/F0) = 2.4)  
Area: 0.002826 m2

C Range: 0 - 360DEG  
C Interval: 30.0DEG  
Test Speed: HIGH  
Temperature:25.3℃  
Operators:zoe  
Test Date:2025-01-01

γ Range: 0 - 180DEG  
γ Interval: 1.0DEG  
Test System:EVERFINE GO-SPEX500\_V1 SYSTEM V2.00.461  
Humidity:65.0%  
Test Distance:3.160m [K=1.0000]  
Remarks: LAMP:BXRE-30G10TH-A-83 Ra:90  
LENS:PM-0132 15R  
NOT DRIVER:48V  
30minutes warm-up



### UTILIZATION FACTORS TABLE

|   |                  |                        |
|---|------------------|------------------------|
| Test:U:47.997V I:0.3092A P:14.841W PF:1.0000 Freq:49.99Hz<br>Lamp Flux:1994.65x1 lm |                  |                        |
| NAME: OZ48-CT-64  | TYPE:            | WEIGHT:                |
| SPEC.: 3000K  | DIM.:            | SERIAL No.: 2501020001 |
| MFR.: RISE  | SUR.: 0.002826m2 | Shielding Angle:       |

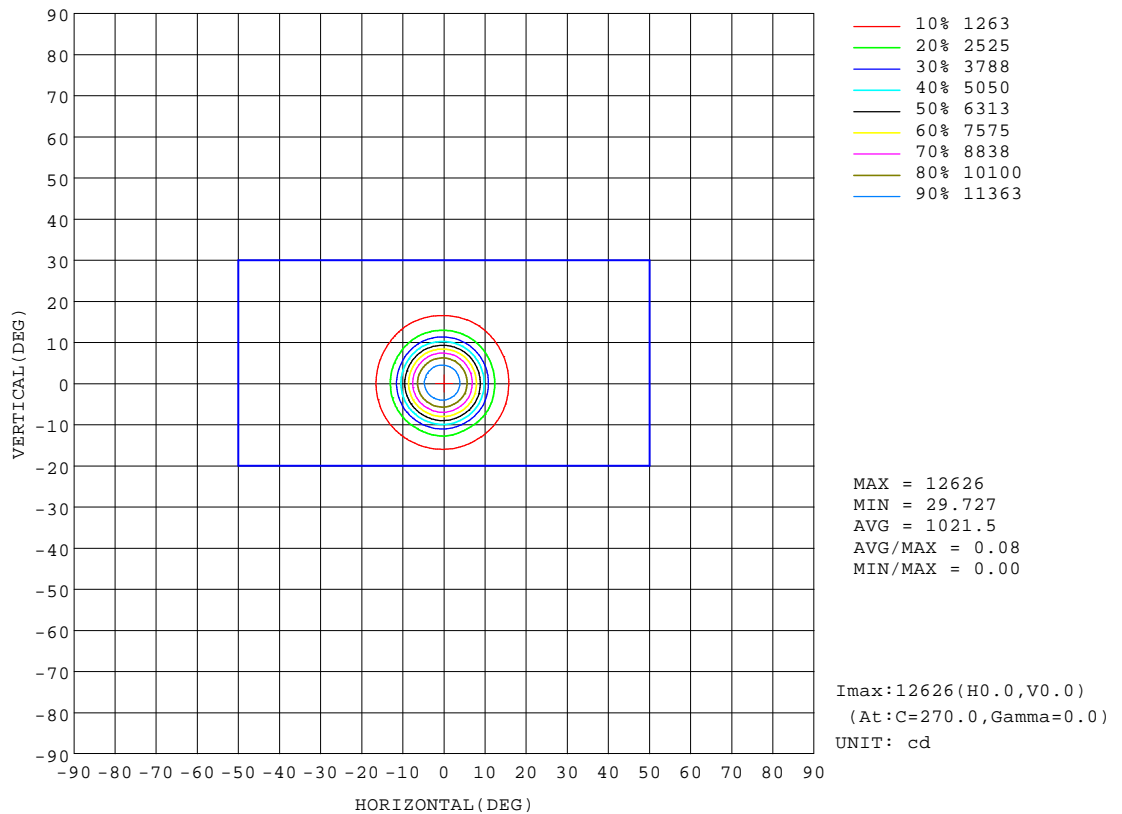
| REFLECTANCE                      |   |     |           |     |     |     |     |               |     |        |
|----------------------------------|---|-----|-----------|-----|-----|-----|-----|---------------|-----|--------|
| Ceiling                          | 0.8   | 0.8 | 0.8       | 0.7 | 0.7 | 0.7 | 0.5 | 0.5           | 0.5 | 0      |
| Walls                            | 0.7   | 0.5 | 0.3       | 0.7 | 0.5 | 0.3 | 0.7 | 0.5           | 0.3 | 0      |
| Working plane                    | 0.2   | 0.2 | 0.2       | 0.2 | 0.2 | 0.2 | 0.2 | 0.2           | 0.2 | 0      |
| ROOM INDEX                       | UTILIZATION FACTORS(PERCENT) $k(RI) \times RCR = 5$ |     |           |     |     |     |     |               |     |        |
| k = 0.60                         | 75  | 69  | 66        | 74  | 69  | 66  | 73  | 69            | 66  | 63     |
| 0.80                             | 81  | 76  | 73        | 80  | 76  | 73  | 79  | 75            | 72  | 69     |
| 1.00                             | 84  | 80  | 77        | 84  | 79  | 76  | 82  | 79            | 76  | 73     |
| 1.25                             | 88  | 83  | 80        | 87  | 83  | 80  | 85  | 82            | 79  | 76     |
| 1.50                             | 90  | 86  | 83        | 89  | 85  | 83  | 87  | 84            | 82  | 78     |
| 2.00                             | 92  | 88  | 86        | 91  | 88  | 85  | 88  | 86            | 84  | 80     |
| 2.50                             | 93  | 90  | 88        | 92  | 89  | 87  | 89  | 87            | 85  | 80     |
| 3.00                             | 94  | 92  | 89        | 93  | 91  | 89  | 90  | 88            | 87  | 81     |
| 4.00                             | 96  | 94  | 92        | 94  | 93  | 91  | 91  | 90            | 89  | 83     |
| 5.00                             | 97  | 95  | 94        | 95  | 94  | 93  | 92  | 91            | 90  | 84     |
| ROOM INDEX                       | UF(total)   |     |           |     |     |     |     |               |     | Direct |
| According to DIN EN 13032-2 2004 |   |     | Suspended |     |     |     |     | SHRNOM = 1.25 |     |        |

C Range: 0 - 360DEG  
C Interval: 30.0DEG  
Test Speed: HIGH  
Temperature:25.3℃  
Operators:zoe  
Test Date:2025-01-01

γ Range: 0 - 180DEG  
γ Interval: 1.0DEG  
Test System:EVERFINE GO-SPEX500\_V1 SYSTEM V2.00.461  
Humidity:65.0%  
Test Distance:3.160m [K=1.0000]  
Remarks: LAMP:BXRE-30G10TH-A-83 Ra:90  
LENS:PM-0132 15R  
NOT DRIVER:48V  
30minutes warm-up

## ISOCANDELA DIAGRAM

|   |                  |                        |
|---|------------------|------------------------|
| Test:U:47.997V I:0.3092A P:14.841W PF:1.0000 Freq:49.99Hz<br>Lamp Flux:1994.65x1 lm |                  |                        |
| NAME: OZ48-CT-64  | TYPE:            | WEIGHT:                |
| SPEC.: 3000K  | DIM.:            | SERIAL No.: 2501020001 |
| MFR.: RISE  | SUR.: 0.002826m2 | Shielding Angle:       |

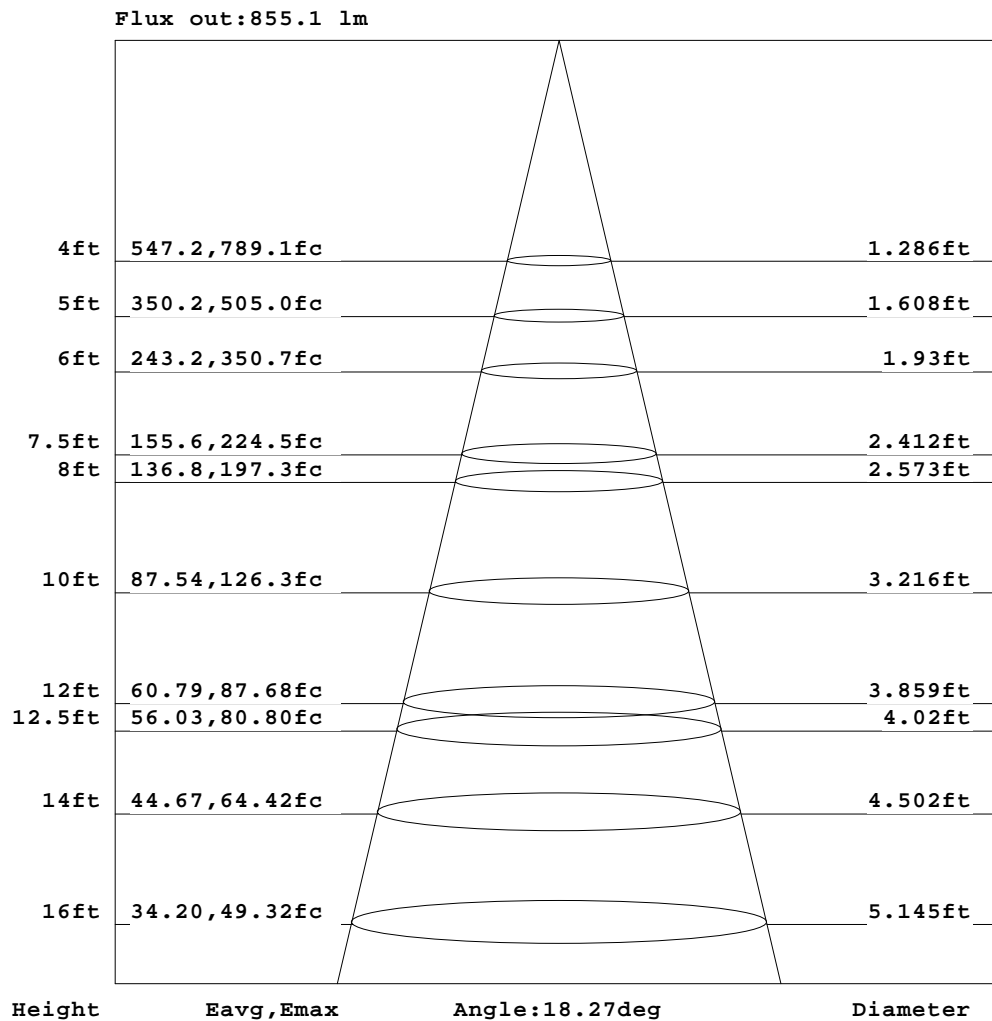


C Range: 0 - 360DEG  
C Interval: 30.0DEG  
Test Speed: HIGH  
Temperature:25.3℃  
Operators:zoe  
Test Date:2025-01-01

γ Range: 0 - 180DEG  
γ Interval: 1.0DEG  
Test System:EVERFINE GO-SPEX500\_V1 SYSTEM V2.00.461  
Humidity:65.0%  
Test Distance:3.160m [K=1.0000]  
Remarks: LAMP:BXRE-30G10TH-A-83 Ra:90  
LENS:PM-0132 15R  
NOT DRIVER:48V  
30minutes warm-up

## AAI Figure

|   |                  |                        |
|---|------------------|------------------------|
| Test:U:47.997V I:0.3092A P:14.841W PF:1.0000 Freq:49.99Hz<br>Lamp Flux:1994.65x1 lm |                  |                        |
| NAME: OZ48-CT-64  | TYPE:            | WEIGHT:                |
| SPEC.: 3000K  | DIM.:            | SERIAL No.: 2501020001 |
| MFR.: RISE  | SUR.: 0.002826m2 | Shielding Angle:       |



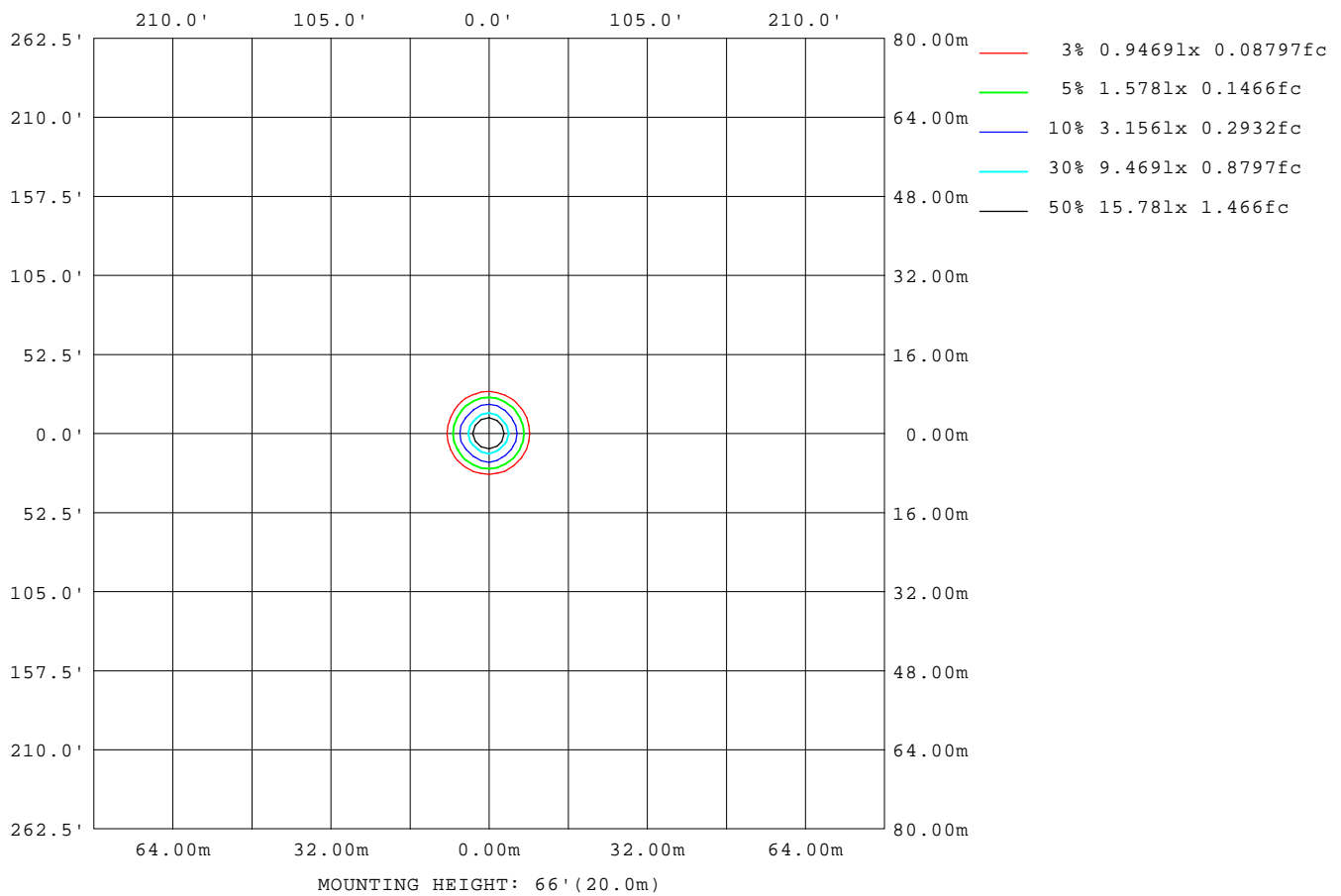
Note:The Curves indicate the illuminated area and the average illumination when the luminaire is at different distance.

C Range: 0 - 360DEG  
C Interval: 30.0DEG  
Test Speed: HIGH  
Temperature:25.3℃  
Operators:zoe  
Test Date:2025-01-01

γ Range: 0 - 180DEG  
γ Interval: 1.0DEG  
Test System:EVERFINE GO-SPEX500\_V1 SYSTEM V2.00.461  
Humidity:65.0%  
Test Distance:3.160m [K=1.0000]  
Remarks: LAMP:BXRE-30G10TH-A-83 Ra:90  
LENS:PM-0132 15R  
NOT DRIVER:48V  
30minutes warm-up

## ISOLUX DIAGRAM

|   |                  |                        |
|---|------------------|------------------------|
| Test:U:47.997V I:0.3092A P:14.841W PF:1.0000 Freq:49.99Hz<br>Lamp Flux:1994.65x1 lm |                  |                        |
| NAME: OZ48-CT-64  | TYPE:            | WEIGHT:                |
| SPEC.: 3000K  | DIM.:            | SERIAL No.: 2501020001 |
| MFR.: RISE  | SUR.: 0.002826m2 | Shielding Angle:       |



C Range: 0 - 360DEG  
C Interval: 30.0DEG  
Test Speed: HIGH  
Temperature:25.3℃  
Operators:zoe  
Test Date:2025-01-01

γ Range: 0 - 180DEG  
γ Interval: 1.0DEG  
Test System:EVERFINE GO-SPEX500\_V1 SYSTEM V2.00.461  
Humidity:65.0%  
Test Distance:3.160m [K=1.0000]  
Remarks: LAMP:BXRE-30G10TH-A-83 Ra:90  
LENS:PM-0132 15R  
NOT DRIVER:48V  
30minutes warm-up

### LED Avg.L Report

|   |                  |                        |
|---|------------------|------------------------|
| Test:U:47.997V I:0.3092A P:14.841W PF:1.0000 Freq:49.99Hz<br>Lamp Flux:1994.65x1 lm |                  |                        |
| NAME: OZ48-CT-64  | TYPE:            | WEIGHT:                |
| SPEC.: 3000K  | DIM.:            | SERIAL No.: 2501020001 |
| MFR.: RISE  | SUR.: 0.002826m2 | Shielding Angle:       |

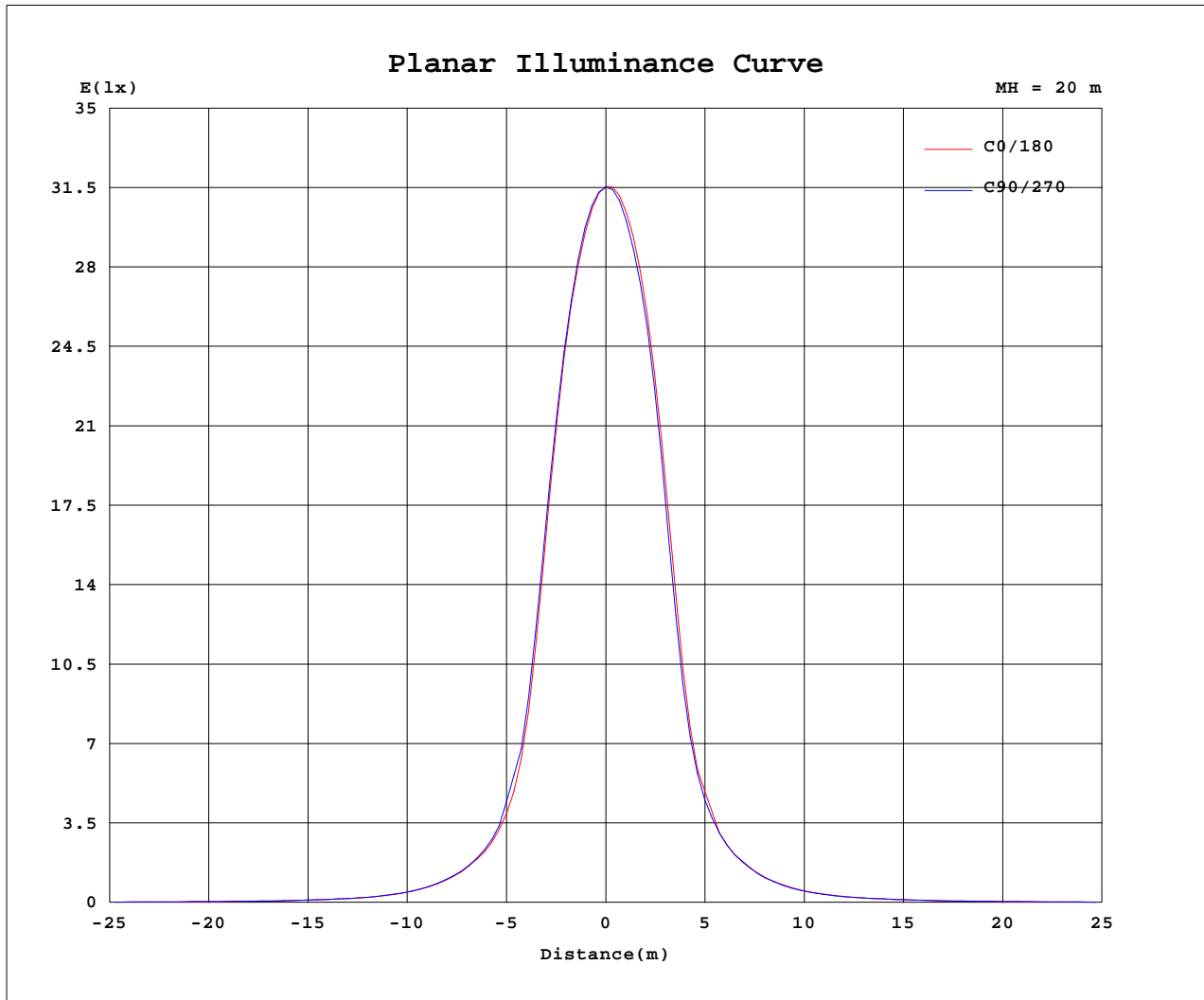
| AvgL           | cd/m2 |
|----------------|-------|
| L_0~180(65)av  | 8929  |
| L_0~180(75)av  | 417   |
| L_0~180(85)av  | 327   |
| L_90~270(65)av | 9563  |
| L_90~270(75)av | 474   |
| L_90~270(85)av | 313   |
| L_45(65)av     | 9321  |
| L_45(75)av     | 397   |
| L_45(85)av     | 205   |

Standard: GB/T 29293-2012

C Range: 0 - 360DEG  
C Interval: 30.0DEG  
Test Speed: HIGH  
Temperature:25.3℃  
Operators:zoe  
Test Date:2025-01-01

γ Range: 0 - 180DEG  
γ Interval: 1.0DEG  
Test System:EVERFINE GO-SPEX500\_V1 SYSTEM V2.00.461  
Humidity:65.0%  
Test Distance:3.160m [K=1.0000]  
Remarks: LAMP:BXRE-30G10TH-A-83 Ra:90  
LENS:PM-0132 15R  
NOT DRIVER:48V  
30minutes warm-up

## Planar Illuminance Curve



C Range: 0 - 360DEG  
 C Interval: 30.0DEG  
 Test Speed: HIGH  
 Temperature: 25.3 °C  
 Operators: zoe  
 Test Date: 2025-01-01

γ Range: 0 - 180DEG  
 γ Interval: 1.0DEG  
 Test System: EVERFINE GO-SPEX500\_V1 SYSTEM V2.00.461  
 Humidity: 65.0%  
 Test Distance: 3.160m [K=1.0000]  
 Remarks: LAMP: BXRE-30G10TH-A-83 Ra: 90  
 LENS: PM-0132 15R  
 NOT DRIVER: 48V  
 30minutes warm-up

## LUMINOUS DISTRIBUTION INTENSITY DATA

|   |                  |                        |
|---|------------------|------------------------|
| Test:U:47.997V I:0.3092A P:14.841W PF:1.0000 Freq:49.99Hz<br>Lamp Flux:1994.65x1 lm |                  |                        |
| NAME: OZ48-CT-64  | TYPE:            | WEIGHT:                |
| SPEC.: 3000K  | DIM.:            | SERIAL No.: 2501020001 |
| MFR.: RISE  | SUR.: 0.002826m2 | Shielding Angle:       |

Table--1

UNIT: X10cd

| C(DEG)<br>γ (DEG) | 0    | 30   | 60   | 90   | 120  | 150  | 180  | 210  | 240  | 270  | 300  | 330  |  |  |  |  |  |  |
|-------------------|------|------|------|------|------|------|------|------|------|------|------|------|--|--|--|--|--|--|
| 0                 | 1261 | 1261 | 1261 | 1261 | 1261 | 1261 | 1261 | 1261 | 1261 | 1261 | 1261 | 1261 |  |  |  |  |  |  |
| 5                 | 1063 | 1060 | 1057 | 1072 | 1088 | 1110 | 1124 | 1120 | 1118 | 1104 | 1092 | 1073 |  |  |  |  |  |  |
| 10                | 472  | 479  | 477  | 500  | 520  | 551  | 568  | 558  | 557  | 530  | 509  | 482  |  |  |  |  |  |  |
| 15                | 144  | 145  | 144  | 151  | 155  | 162  | 177  | 164  | 179  | 165  | 160  | 148  |  |  |  |  |  |  |
| 20                | 64.9 | 64.8 | 64.8 | 67.3 | 70.5 | 71.7 | 72.7 | 74.0 | 75.2 | 74.4 | 70.8 | 66.1 |  |  |  |  |  |  |
| 25                | 31.8 | 31.2 | 31.1 | 32.4 | 32.9 | 35.0 | 36.0 | 35.4 | 36.9 | 35.1 | 34.3 | 32.1 |  |  |  |  |  |  |
| 30                | 16.9 | 16.6 | 16.3 | 16.9 | 17.0 | 18.3 | 19.4 | 18.9 | 19.8 | 18.8 | 18.0 | 17.2 |  |  |  |  |  |  |
| 35                | 10.6 | 10.7 | 10.5 | 10.6 | 10.6 | 11.4 | 11.7 | 11.8 | 12.0 | 11.9 | 11.3 | 10.9 |  |  |  |  |  |  |
| 40                | 7.04 | 7.15 | 6.98 | 7.11 | 7.00 | 7.38 | 7.60 | 7.81 | 7.80 | 7.81 | 7.36 | 7.14 |  |  |  |  |  |  |
| 45                | 5.23 | 5.33 | 5.25 | 5.30 | 5.26 | 5.45 | 5.50 | 5.63 | 5.70 | 5.64 | 5.45 | 5.35 |  |  |  |  |  |  |
| 50                | 4.21 | 4.30 | 4.30 | 4.32 | 4.35 | 4.38 | 4.37 | 4.47 | 4.51 | 4.43 | 4.39 | 4.30 |  |  |  |  |  |  |
| 55                | 3.23 | 3.29 | 3.33 | 3.35 | 3.34 | 3.30 | 3.29 | 3.32 | 3.41 | 3.35 | 3.35 | 3.23 |  |  |  |  |  |  |
| 60                | 2.15 | 2.24 | 2.28 | 2.28 | 2.23 | 2.16 | 2.14 | 2.12 | 2.23 | 2.19 | 2.21 | 2.11 |  |  |  |  |  |  |
| 65                | 1.07 | 1.10 | 1.16 | 1.16 | 1.15 | 1.09 | 1.06 | 1.06 | 1.12 | 1.12 | 1.12 | 1.08 |  |  |  |  |  |  |
| 70                | 0.46 | 0.48 | 0.52 | 0.52 | 0.51 | 0.48 | 0.46 | 0.44 | 0.48 | 0.48 | 0.48 | 0.45 |  |  |  |  |  |  |
| 75                | 0.03 | 0.04 | 0.03 | 0.04 | 0.03 | 0.03 | 0.03 | 0.02 | 0.02 | 0.03 | 0.02 | 0.03 |  |  |  |  |  |  |
| 80                | 0.01 | 0.01 | 0.01 | 0.01 | 0.01 | 0.01 | 0.01 | 0.01 | 0.01 | 0.01 | 0.01 | 0.01 |  |  |  |  |  |  |
| 85                | 0.01 | 0.01 | 0.01 | 0.01 | 0.01 | 0.01 | 0.01 | 0.01 | 0.01 | 0.01 | 0.01 | 0.01 |  |  |  |  |  |  |
| 90                | 0.00 | 0.00 | 0.00 | 0.00 | 0.00 | 0.00 | 0.00 | 0.00 | 0.00 | 0.00 | 0.00 | 0.00 |  |  |  |  |  |  |
| 95                | 0.00 | 0.00 | 0.00 | 0.00 | 0.00 | 0.00 | 0.00 | 0.00 | 0.00 | 0.00 | 0.00 | 0.00 |  |  |  |  |  |  |
| 100               | 0.00 | 0.00 | 0.00 | 0.00 | 0.00 | 0.00 | 0.00 | 0.00 | 0.00 | 0.00 | 0.00 | 0.00 |  |  |  |  |  |  |
| 105               | 0.00 | 0.00 | 0.00 | 0.00 | 0.00 | 0.00 | 0.00 | 0.00 | 0.00 | 0.00 | 0.00 | 0.00 |  |  |  |  |  |  |
| 110               | 0.00 | 0.00 | 0.00 | 0.00 | 0.00 | 0.00 | 0.00 | 0.00 | 0.00 | 0.00 | 0.00 | 0.00 |  |  |  |  |  |  |
| 115               | 0.00 | 0.00 | 0.00 | 0.00 | 0.00 | 0.00 | 0.00 | 0.00 | 0.00 | 0.00 | 0.00 | 0.00 |  |  |  |  |  |  |
| 120               | 0.00 | 0.00 | 0.00 | 0.00 | 0.00 | 0.00 | 0.00 | 0.00 | 0.00 | 0.00 | 0.00 | 0.00 |  |  |  |  |  |  |
| 125               | 0.00 | 0.00 | 0.00 | 0.00 | 0.00 | 0.00 | 0.00 | 0.00 | 0.00 | 0.00 | 0.00 | 0.00 |  |  |  |  |  |  |
| 130               | 0.00 | 0.00 | 0.00 | 0.00 | 0.00 | 0.00 | 0.00 | 0.00 | 0.00 | 0.00 | 0.00 | 0.00 |  |  |  |  |  |  |
| 135               | 0.00 | 0.00 | 0.00 | 0.00 | 0.00 | 0.00 | 0.00 | 0.00 | 0.00 | 0.00 | 0.00 | 0.00 |  |  |  |  |  |  |
| 140               | 0.00 | 0.00 | 0.00 | 0.00 | 0.00 | 0.00 | 0.00 | 0.00 | 0.00 | 0.00 | 0.00 | 0.00 |  |  |  |  |  |  |
| 145               | 0.00 | 0.00 | 0.00 | 0.00 | 0.00 | 0.00 | 0.00 | 0.00 | 0.00 | 0.00 | 0.00 | 0.00 |  |  |  |  |  |  |
| 150               | 0.00 | 0.00 | 0.00 | 0.00 | 0.00 | 0.00 | 0.00 | 0.00 | 0.00 | 0.00 | 0.00 | 0.00 |  |  |  |  |  |  |
| 155               | 0.00 | 0.00 | 0.00 | 0.00 | 0.00 | 0.00 | 0.00 | 0.00 | 0.00 | 0.00 | 0.00 | 0.00 |  |  |  |  |  |  |
| 160               | 0.00 | 0.00 | 0.00 | 0.00 | 0.00 | 0.00 | 0.00 | 0.00 | 0.00 | 0.00 | 0.00 | 0.00 |  |  |  |  |  |  |
| 165               | 0.00 | 0.00 | 0.00 | 0.00 | 0.00 | 0.00 | 0.00 | 0.00 | 0.00 | 0.00 | 0.00 | 0.00 |  |  |  |  |  |  |
| 170               | 0.00 | 0.00 | 0.00 | 0.00 | 0.00 | 0.00 | 0.00 | 0.00 | 0.00 | 0.00 | 0.00 | 0.00 |  |  |  |  |  |  |
| 175               | 0.00 | 0.00 | 0.00 | 0.00 | 0.00 | 0.00 | 0.00 | 0.00 | 0.00 | 0.00 | 0.00 | 0.00 |  |  |  |  |  |  |
| 180               | 0.00 | 0.00 | 0.00 | 0.00 | 0.00 | 0.00 | 0.00 | 0.00 | 0.00 | 0.00 | 0.00 | 0.00 |  |  |  |  |  |  |

C Range: 0 - 360DEG  
C Interval: 30.0DEG  
Test Speed: HIGH  
Temperature:25.3℃  
Operators:zoe  
Test Date:2025-01-01

γ Range: 0 - 180DEG  
γ Interval: 1.0DEG  
Test System:EVERFINE GO-SPEX500\_V1 SYSTEM V2.00.461  
Humidity:65.0%  
Test Distance:3.160m [K=1.0000]  
Remarks: LAMP:BXRE-30G10TH-A-83 Ra:90  
LENS:PM-0132 15R  
NOT DRIVER:48V  
30minutes warm-up